

Activate a Plan with GIS Mapping


If the Include GIS Selection checkbox is selected on a plan, upon activation, users can search the map using circles and polygons to determine which contacts and contact folders will be included. Note that Standard Mapping Services does not include the Search Bar (Geo Coder), Query Select Tool, or the ability to deselect the Drawing Layer.

1. To make a GIS contact selection on a plan, ensure the Include GIS Select checkbox is selected on the plan.

Plan Information

General Visual Modeler Action Steps Relationships Properties

Display Name:

Folder:  [Choose Folder](#)

Interruption Level: ▼

Severity Level: ▼

Include GIS Selection:

Description:

2. Click Activate, then Confirm.
3. Click Show Selection Map.

Plan Activation Options

New GIS Contact Selection

Estimated Number of Contacts Selected: 0

Estimated Number of Contacts Folders: 0

Destination Folder Selection:

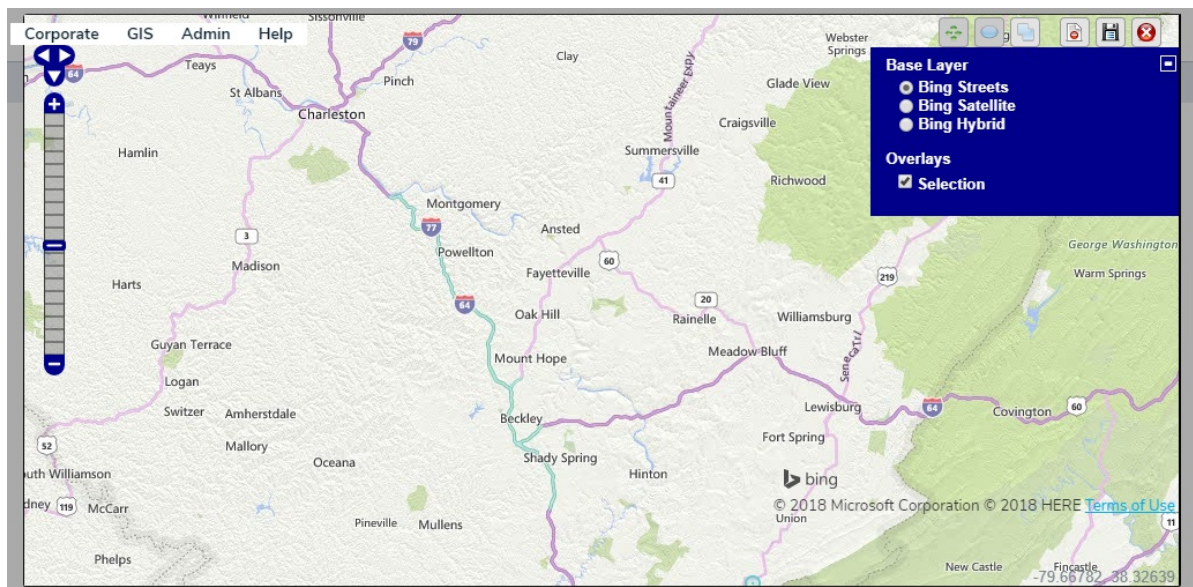
Number of Polygons: 0

Show Selection Map



Cancel





Activate

4. Click the  icon to display the Base Layer options and make a new selection is needed.



5. Click one of the following icons in the top-right corner of the map to make a selection:

-  Navigate. Click this icon to click and drag the map to a new location.
-  Draw a circle to select items.

-  Draw a polygon to select items.
6. Click the  icon to save your selection and return to the Plan Activation Options page. To clear the selections, click the  icon. To clear the selections and close the map, click the  icon.
7. Click Activate, then Confirm.

Plan Activation Options

New GIS Contact Selection

Estimated Number of Contacts Selected: 4

Estimated Number of Contacts Folders: 3

Destination Folder Selection:

Number of Polygons: 1

[Show Selection Map](#)

[Cancel](#) [Activate](#)